

# 4'x4' Aluminum Panel

Assembly Instructions

GRAY PN10957  
BROWN PN10967

## RECOMMENDED TOOLS



Rubber Mallet



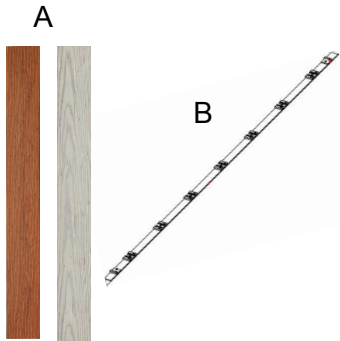
Screwdriver  
(Phillips)



Work Gloves



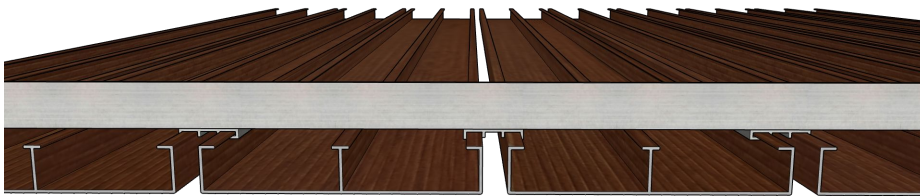
	Part Number	Description	Qty.
A	10957-2/10967-2	Gray/Brown Aluminum Board	8
B	10950	Stringer with M4x6mm Panhead Set Screws	2



# 4'x4' Aluminum Panel

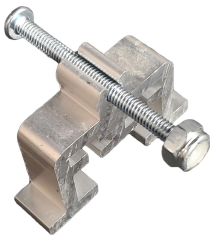
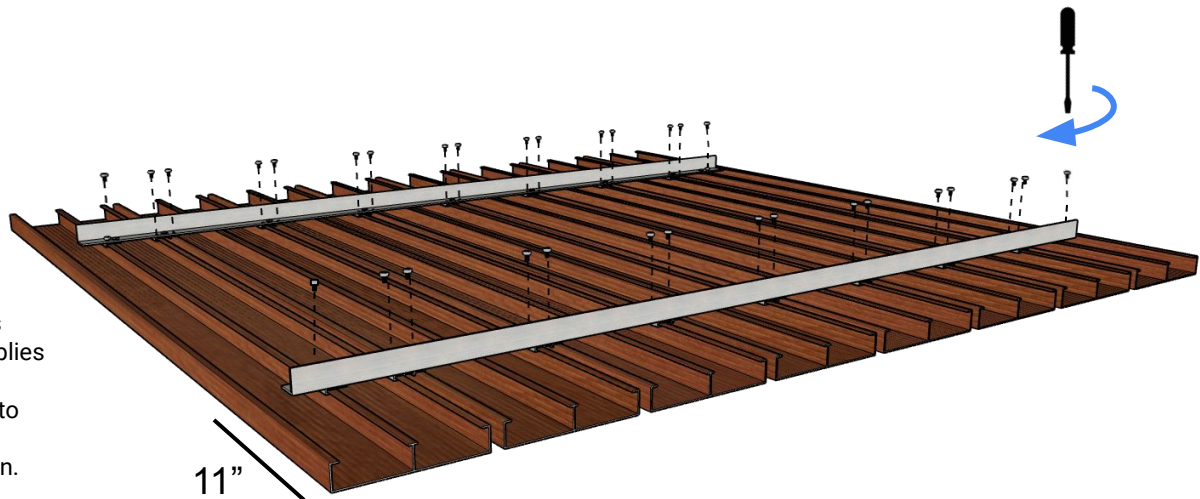
## Assembly Instructions

- 1 Unbox all boards. Lay out each individual deck board face down with channel profile facing up on an even surface. Notice one edge of the board may have a powder coat build up. Orientate all board so that build up is on one edge of the 4'x4' panel.



- 2 Slip Stringer Assemblies onto the edge with less powder coat. Orientate angle so it is facing the center of the panel. Slide Stringer Assembly onto the board channel capturing each fastener on the Stringer. Slide the first stringer down the entire panel until it is roughly 11" from edge. Repeat for the second stringer.

- 3 With all Aluminum Boards flush and Stringer Assemblies in place, use a standard Phillips head screwdriver to tighten each panhead set screw. DO NOT overtighten.



### Optional Deck Lockers:

PN10868 - Aluminum Deck Locker (4) Pack is not included. Use the optional Deck Locker to secure the 4'x4' Aluminum Panel onto the frame by pressing the lock bolt.

*\*Sold Separately\**

