

Rectangular Float Mounting Instructions

The buoyancy rating for the 48"x 24"x 12" floats is 380lbs each. Three floats are recommended per 16' feet of dock.

Step 1:

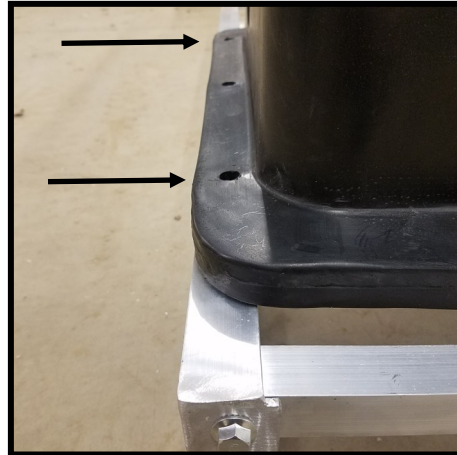
Lay frame upside down and position floats at the ends of the frame. The float will be mounted along the 2' dimension.



Step 2:

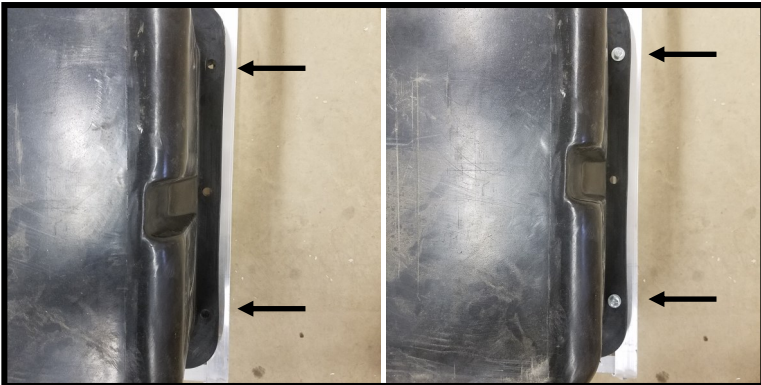
Align one side of the mounting flange to be flush with the outside of the frame. Mark two mounting hole locations, remove float and drill out the two mounting holes.

Realign the float and secure first side of the float using 3/8"x2-1/2" mounting bolts.



Step 3:

On the opposite side of the float, install 3/8"x 2-1/2" mounting bolts through two mounting holes, the bolts will not penetrate the frame but will pass on the inside of the aluminum frame.



Step 4:

Install fender washer and nut. Tighten thoroughly. Fender washer should tightly clamp the aluminum frame. This completes float installation.

