



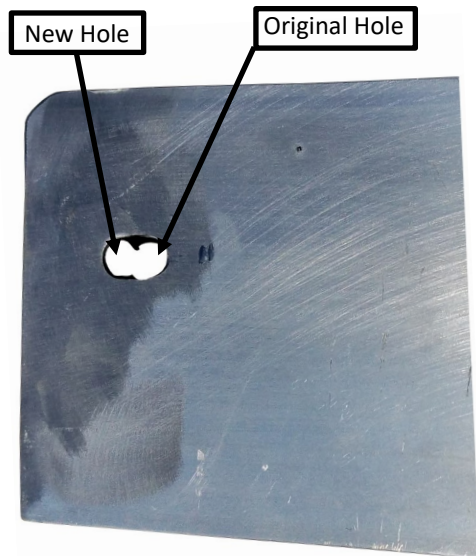
## Dock Wedge

### Installation Instructions

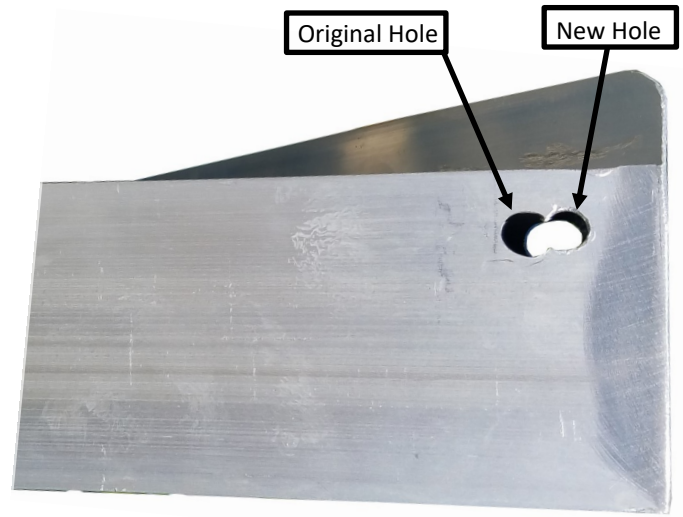


Tools Required: Cordless Drill and 3/8" drill bit, M14 and M17 Wrenches, Work Gloves and Safety Glasses.

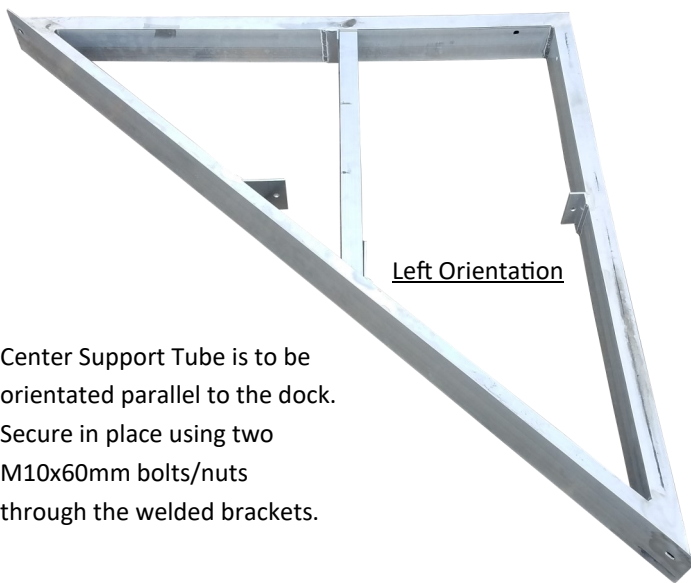
Outside Frame View



Inside Frame View



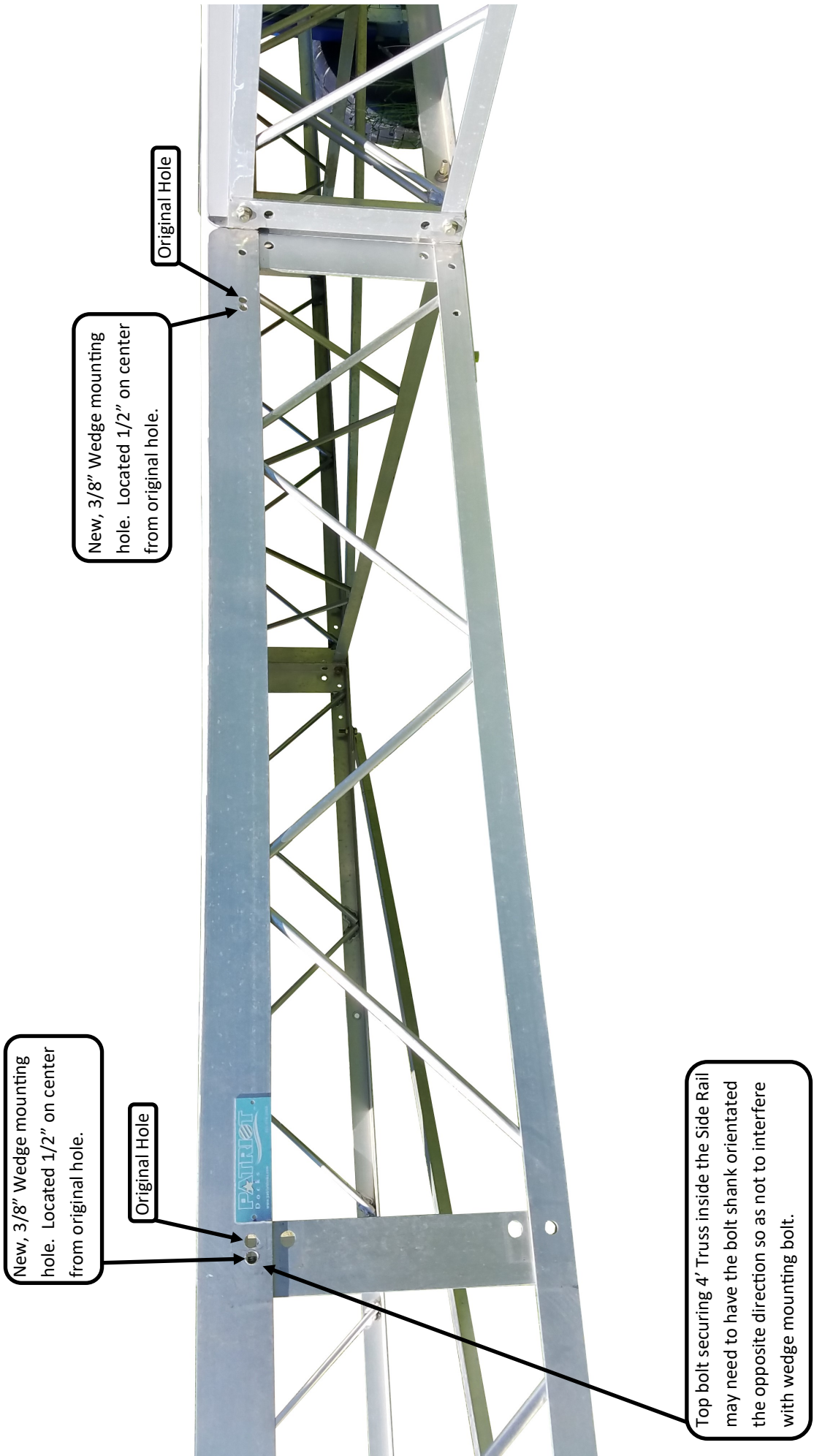
Entering from the outside slot on the wedge frame, drill a new 3/8" hole nearer the outer corner of the frame. Positioning the drill bit against the outer edge of the slot helps keep



Center Support Tube is to be orientated parallel to the dock.  
Secure in place using two M10x60mm bolts/nuts through the welded brackets.

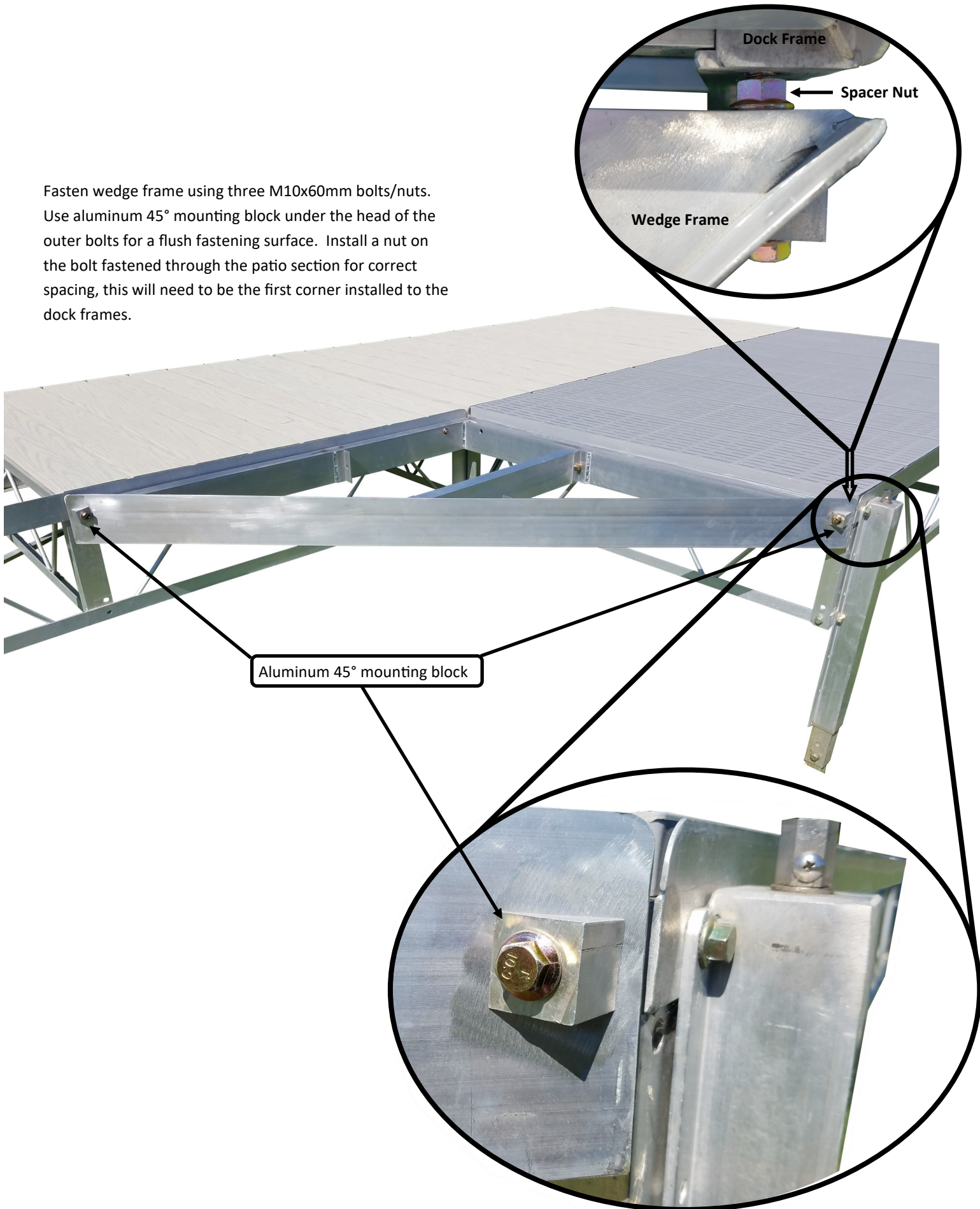
Remove the upper outside bolt from the 4' Truss connection. This hole location will be used for mounting the wedge frame. \*Tip\* Running a 3/8" drill bit through the hole will help ensure the mounting bolt will fit easily into position.







Fasten wedge frame using three M10x60mm bolts/nuts. Use aluminum 45° mounting block under the head of the outer bolts for a flush fastening surface. Install a nut on the bolt fastened through the patio section for correct spacing, this will need to be the first corner installed to the dock frames.



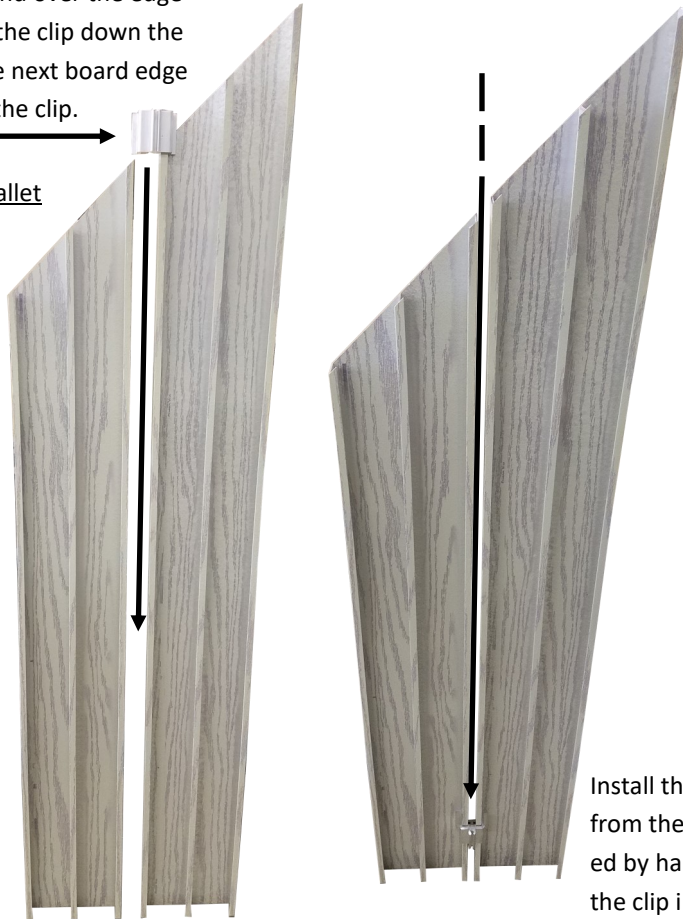
## Wedge Panel Assembly



Start by fitting the first clip by hand over the edge of the board profile. Gently tap the clip down the first board profile and feed in the next board edge profile into the opposite side of the clip.

Use a hard piece of wood and mallet to tap the clips into position.

Tap the first clip towards the bottom of the panel. Allowing for 2" of space between the edge of the panel and the clip. Repeat these steps to complete panel assembly.



Install the clip securing the smallest corner starting from the flush end of the boards. Get the clip started by hand then clamp the pieces in place and tap the clip into position. \*Tip\* Smallest corner can be attached to the next board and then attach the pair to the rest of the panel.